



Wastewater & Public Works Newsletter

Issue #23 Fall/Winter 2018

News from Public Works Board, Water Policy Board, Municipal Wastewater Committee meetings



The Christmas Service Anniversary Luncheon has arrived!

DATE: TUESDAY, DECEMBER 11, 2018

PLACE: Wastewater Farm Headquarters

TIME: NOON



The main meat course and drinks will be provided

Please bring a dish to pass

MICHIGAN'S ADVENTURE

Accurate Excavators began their construction work on the portion of the Michigan's Adventure sewer connection project that Michigan's Adventure is responsible for. Despite the weather and holidays, they made progress. They estimate that their work should be finished up in mid January.

FLOWS AND LAGOON LEVELS

The average daily wastewater flow received at the WWTP in October was 13.7 MGD, 22% higher than the same period last year. Hauled waste flow for October was 5.1 MG, 16% higher than the same period last year. The volume of water in the storage lagoons near the end of October was 1,766 MG, exactly the same volume as this time last year.

MANHOLE REHABILITATION

Progress: Despite interruptions from rain, Plummer's Environmental Services completed the rehabilitation work on the selected ten manholes of the northern interceptor. They used cured-in-place lining to do the job. Cured-in-place lining uses resin and layers of felt and fiberglass. The same technique is a popular means of lining sewers because, as the name suggests, the lining can be added to a failing sewer while the pipe is in place, thus eliminating the need to excavate.

WILDLIFE HABITAT COUNCIL CERTIFICATION

The Wastewater System has been involved in the Wildlife Habitat Council certification program for the past few years. This started as the vision of Anita Friend, our Laboratory Supervisor, and she continues to coordinate the program. The first time we were certified, we received the "Rookie of the Year" award. In our recent recertification we were evaluated on the each of the various projects in our program: nest box monitoring, pollinator plot (i.e., wildflower planting), nature trail, Pheasants Forever habitat, and timber stand improvement. The judges assigned us a numerical score for each project, which resulted in a total program score of 321. That score put us solidly in the "Gold" level, as seen on our certificate below. "Gold" level certification, which is the highest level achievable, is reserved for programs with scores of 236 and higher.

THE 2018 GROWING SEASON

Progress: Harvest has been running full steam the last half of October. We had been in a holding pattern waiting for the wet weather to pass before harvest conditions were right. We started corn on the 11th and ran for a few days until the soybeans were ready. We began beans on the 16th and finished on the 23rd. Soybean yields were good, about even with last year's yields. Corn yields so far look promising also. The grain center is up and running though there are roughly two weeks of work left on the project. Crews will be on site to wrap things up as harvest progresses. We had to extend our irrigation season through the month of October because the heavy rains that continued through September left lagoon levels high and required extra time to bring them down. The season came to a close on October 25. Another record harvest for both corn and soybeans!

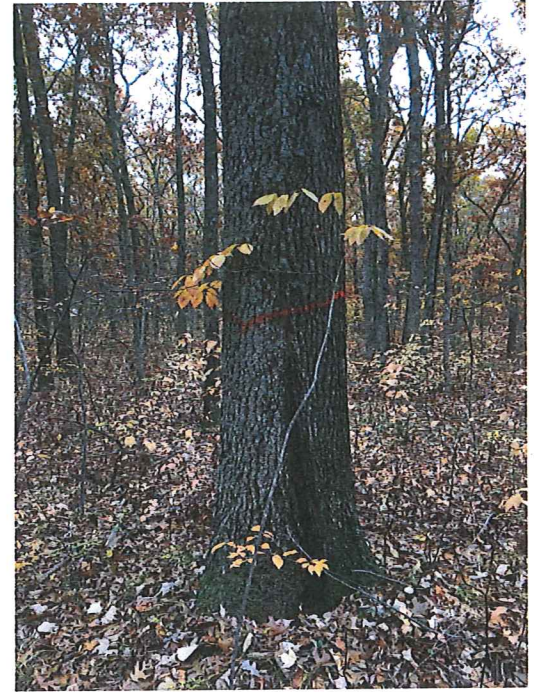


MOSQUITO CREEK TRAILS

Progress is being made on the proposed mountain bike trails through the woods on the northern part of Wastewater property. Construction began this month. By the end of next month, they hope to have the gravel parking lot done (located on Maple Island Road), the entrance sign posted, and the connecting trail from the trailhead to the blue-level trail completed. The trails are beautiful and inviting, as the picture below reveals. If you don't own a mountain bike, now's the time to put one on your Christmas list! The trails will also be available for walking, jogging, and snow shoeing. When complete, there will be easy, intermediate, and difficult trails available (designated as green, blue, and black, respectively, just as ski slopes are).



Go where the trail may lead. This one certainly looks inviting!



In the same area where the mountain biking trails are being constructed, timber stand improvement is also taking place. The photo above shows a tree marked for removal.

TRASH RAKES: Two out of three new bar screens have been installed at the RI pump station. The parts that are visible in the picture are the trash rakes, which remove the debris that gets caught on the bar screens. The bars on the trash rake cycle around like the stairs on an escalator. The debris is carried up by the bars and dumped on the other side as the bars curve around the top and head back down on the other side.



INFRASTRUCTURE MAINTENANCE & IMPROVEMENT PROJECTS CELL THREE RENO

Triangle Associates continues to make steady progress on the Cell 3 Renovation project. This month they poured concrete pads for the motor control centers as well as milled the asphalt along the Cell 3 access road. They discovered that the asphalt along the cell wall was much deeper than expected and needed to be pulverized, removed and replaced with gravel in order to put in a road that will stand the test of time. Part of readying the Cell 3 access road for paving has also involved removing five pipe connection structures that were spaced evenly along the north side of the cell on the edge of the road. They were originally put in for sludge disposal with the idea that piping could be connected to them and the sludge pumped to a storage tank (which is still standing) and then dewatered with a belt filter press. This sludge handling process was never implemented, so those pipe connections have done little more than impede snow plowing for many years. We're certainly glad to have them removed.

